

SQUARE ALUMINUM TENON OR FLUSH MOUNT ARM

DESCRIPTION

The Square Aluminum Tenon Arm is ideal for tennis courts, automotive dealerships, and commercial decorative light pole applications. Mountable on steel or aluminum poles, existing or new.

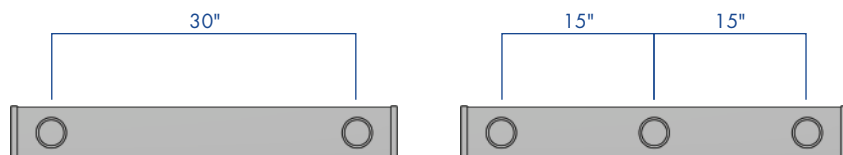
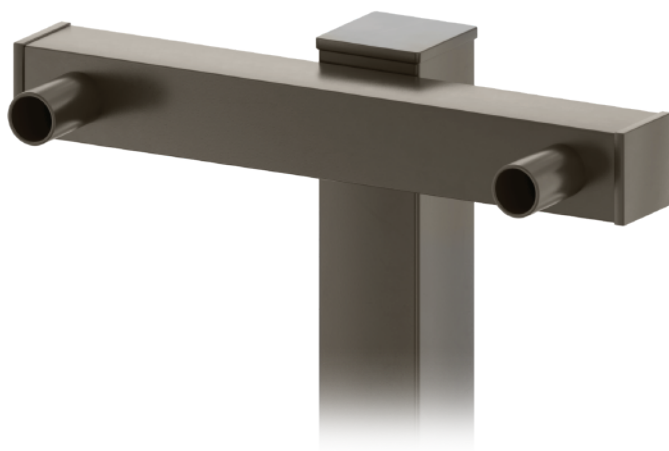
FEATURES

Crossarms fabricated from 4" x 4" 6063 T6 Aluminum Alloy with 2.375" O.D. tenons for fixture mounting.

Flush drilled mounting optional.

Stainless Steel hardware.








TGIC thermoset polyester powder coat finish is electrostatically applied at a 3.0 mil nominal thickness. A five stage metal pre-treatment process and sealer provide maximum corrosion resistance. The powder top coat is baked in excess of 400 degrees for supreme endurance.



SUITABLE FOR
WET
LOCATIONS

ORDERING INFORMATION

AVPL -

ARM	FIXTURE MOUNT TYPE	MOUNTING	FINISH
FF-SATA	PT23 TENON	2-180..... 	DARK BRONZE
	DRILLED MOUNT	3-180..... 	BLACK
		T-3..... 	WHITE
		T-4..... 	GREY
		H-4..... 	GREEN
		H-5..... 	
		H-6..... 	

CONTACT
FACTORY FOR
DRILLING OPTIONS

ALL RAL COLORS
AVAILABLE